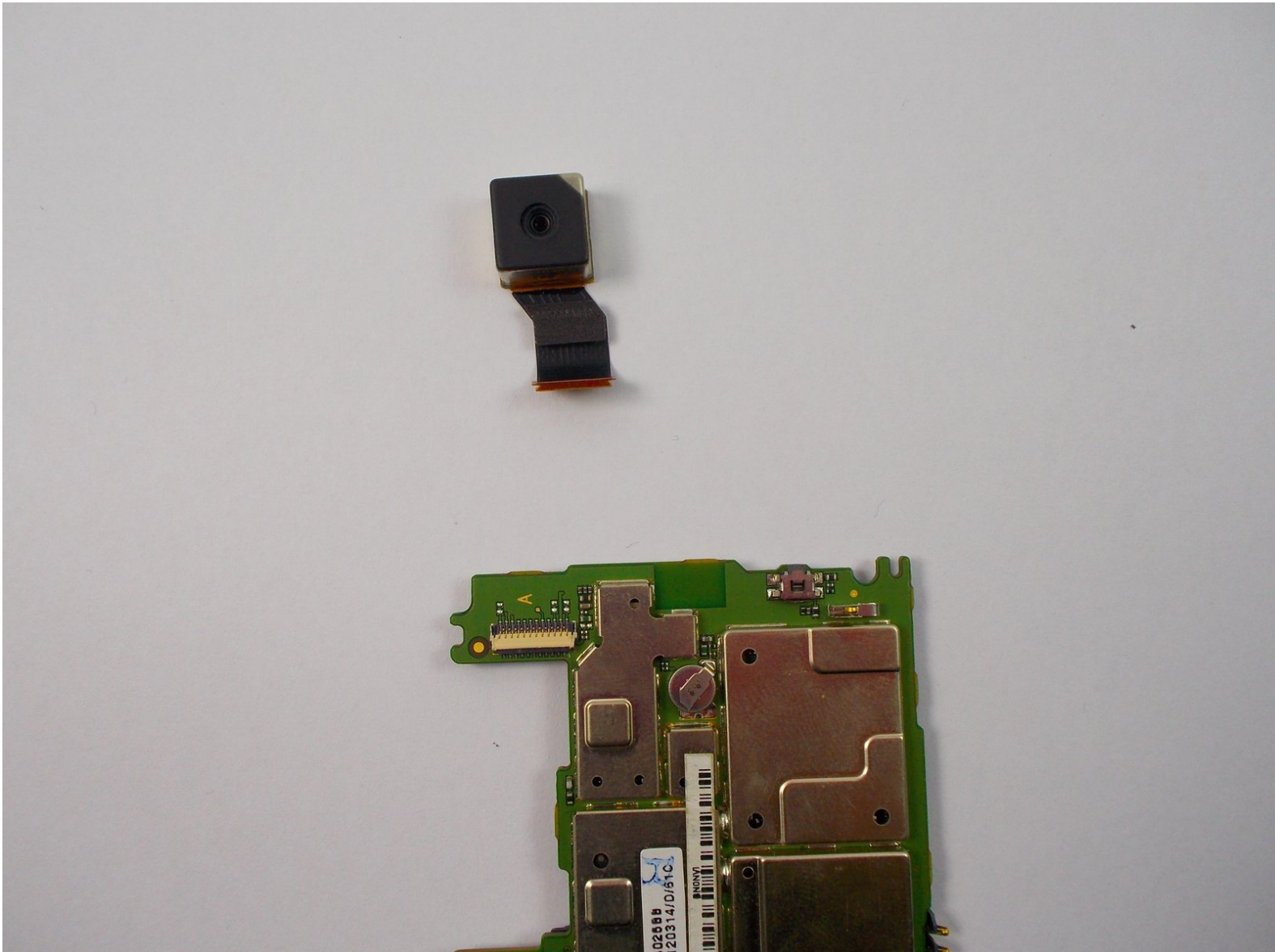




Motorola Droid Pro SD Card/SIM Card PCB Board Replacement

This guide will show you how to partially disassemble your device and get to the PCB board.

Written By: Peter Cakounes



INTRODUCTION

Before continuing through the replacement process make sure you power down your devices and work in a clean area free of dirt. Also use a static band so you don't damage your device.



TOOLS:

- [T4 Torx Screwdriver](#) (1)
- [iFixit Opening Tools](#) (1)



PARTS:

- [Motorola Droid Pro Camera](#) (1)

Step 1 — SD Card/SIM Card PCB Board



- Remove the back cover and battery by using the thumb tabs.

Step 2



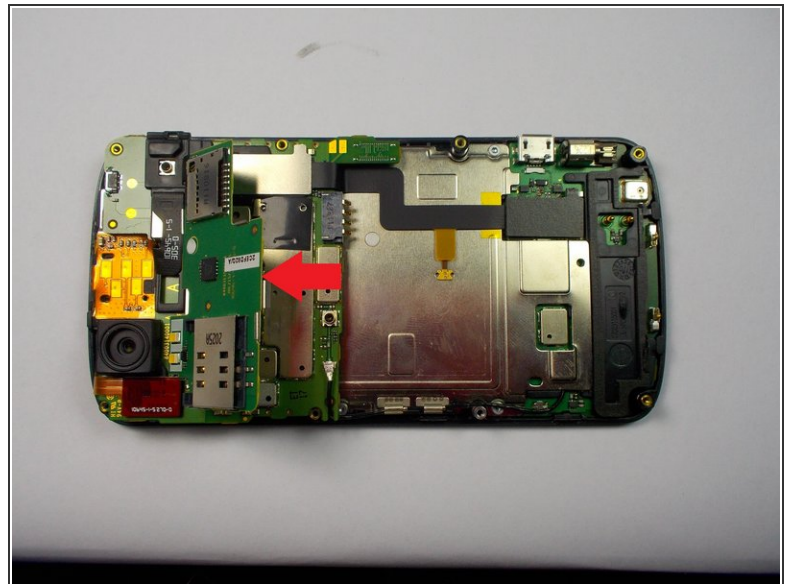
- Unscrew the 8 back panel screws using the T4 Torx screwdriver.

Step 3



- Use a spudger to open the phone along the sides between the back panel and the chrome trim.
- ⓘ It is held together by small clips that lock in. You may have to use a little force to unlock them.
- Go around on all sides then pull the back panel off.

Step 4



- Gently lift the SD & SIM card board (PCB) as shown in the following pictures.
- This will expose the ribbon cable attached to the board and another ribbon cable for the mother board. Remove them both using the spudger.
- Once the small one is removed the small board can be pulled off.

This document was generated on 2019-09-23 08:54:12 AM (MST).

To reassemble your device, follow these instructions in reverse order.